

38TH BULL SALE ON FARM 15TH MAY 2026

FEATURING 21 RISING 2 YR OLD POLLED BULLS AND 1 HERD SIRE



GLEN ANTHONY LTD EDITION (R4)

SEMEN AVAILABLE AUGUST/SEPTEMBER 2026

Tony Thompson & Family • Glen Anthony Simmentals

825 Farm Road Waipukurau

PH: 027 280 6148

EM: glenanthony1@yahoo.co.nz



BUYING ONLINE?

- This sale will be held as a HYBRID ON-FARM auction on bidr (bidr.co.nz).
- There will be online bidding and a livestream of the sale for bidders.
- All online purchasers must register with bidr through an account with a bidr partner agency before sale day.
- For help with signing up or registering, contact the bidr team on 0800 TO BIDR (0800 86 2437) or email enquiries@bidr.co.nz

Alternatively, contact your local bidr® representative:

Upper North Island Territory Manager

Bruno Dos Santos
Bruno.Santos@bidr.co.nz
027 221 8276

Upper South Island Territory Manager

McKenzie Alfeld
Mckenzie.Alfeld@bidr.co.nz
027 341 8066

Lower North Island Territory Manager

Liv Manley
Olivia.Manley@bidr.co.nz
027 348 6354

Lower South Island Territory Manager

Mya Reid
Mya.Reid@bidr.co.nz
021 204 5824

38th ANNUAL STUD AND COMMERCIAL BULL SALE

All Bulls are semen and service tested.
All Bulls are blood tested free of BVD and vaccinated.

On behalf of
Tony Thompson and Family
RD4, Waipukurau 4284
Phone: 027 280 6148
Email: glenanthony1@yahoo.co.nz

**FRIDAY 15th MAY 2026
COMMENCING 12.30pm**

Covered Arena on Farm
825 Farm Road • Map Back Cover
Inspection welcome anytime or from 11am on Sale day.

Booking Company: PGG Wrightsons
Auctioneer: Andrew Holt - PGG Wrightsons

Morning tea and luncheon available

PLEASE BRING THIS CATALOGUE TO THE SALE

GLEN ANTHONY STUD

EST.1974

THURSDAY 14 JUNE 2024.

What a milestone was reached here at Glenanthy at our 36th Annual bull sale when we celebrated 50 years of breeding Simmental cattle. It was so pleasing to have so many past breeders and buyers present at the BBQ to help celebrate this special event.

50 YEARS - MANY GREAT MEMORIES

1972 - 20 crossbred heifers on a lifestyle block in Matamata.

1974 - we moved to Waipukurau. Glenanthy Simmental Stud becomes an entity with the purchase of two purebred cows.

1975 - purchase of 230 acres at 825 Farm Road.

1975-1980 - the crossbred herd replaced by buying 25 imported purebred cows at various clearance sales.

1978 - the first Glenanthy R2yr bulls sold. Three purebred entries at the National Bull Sale, top price \$2,000.

1978 - Hastings A & P Show, October 1978, our first attempt at exhibiting Simmental cattle.

1984 - Glenanthy Newry sells at the National Sale for \$17,000 to the Bates family of Whanganui.

1986 - Our first Meat & Wool Cup. Glenanthy Prestige (3yr old) wins at the Gisborne A & P Show.

1988 - First Glenanthy Annual bull sale held at Waipukurau sale yards.

1990 - From the base herd of 25 imported purebred cows we now have a herd of 100 through the use of AI and ET as well as natural matings.

1992 - AX 14 (3yr old cow) wins Meat & Wool Cup at Auckland's Royal Easter Show.

1993 - Aristocrat (yearling bull) makes it two years in a row.

1994 - Zelda with Sgt Pepper at foot makes it three in a row.

1995 - 270 acres of river flats purchased at OngaOnga, making our farm 500 acres in total.

1999 - The herd now grown to 150 purebred breeding cows.

2000 - Our Annual bull sale moves on farm to our covered sales arena at 825 Farm Road.

2003 - Glenanthy Morven sells at our on farm bull sale to Cornwall Park Simmentals for \$17,000.

2005 - We import Monreid Yardstick from Australia. He goes on to win three Royal Show Meat and Wool Cups, Hamilton, Auckland and Christchurch.

2011 - Y-arta is born. His 14 year career begins. Meat and Wool Cup wins as a yearling in Dannevirke and as a 4 and 5 year old in Auckland. He becomes one of the leading sires in Australasia.

2011 - We sell the farm at OngaOnga. Our herd reverts back to 70 breeding cows on the home block at Farm Road.

2020 - After 42 years of supporting A & P shows each year, often exhibiting up to 20 cattle at each show the COVID 19 Pandemic effectively puts an end to cattle showing as we know it.

2022 - We have a record on farm bull sale 19/20 bulls sell for an average over \$10,000.

WHAT GREAT MEMORIES AND ACHIEVEMENTS.

THANKS FOR ALL THE HELP:

Firstly family. Thanks to Kimberley, Mark, Samantha and Bradley for their help throughout our many years of showing and 25 years of Annual bull sales on the home farm.

Also many thanks to brother Kevin who has been always ready to help at National Sales [from 1978] and annual Bull Sales over the last 37 years.

Secondly Friends and young people: Thanks to all those who have helped at show time and sale time, especially Amy Hoogenboom and Sue Wylie. Sue has been a constant member of our Show and sales team for the last 20 years.

Finally, thanks to the many farm workers, who over the years have kept the home fires burning while we travelled the Country with our show cattle. A special mention to Grant Latimer, an old friend who returned to Glenanthy in 2020 as stock manager. A friend in need is a friend indeed. Grant's enthusiasm for Simmental cattle rekindled my interest in stud cattle breeding after several difficult years.

THE LAST TWELVE MONTHS AT GLEN ANTHONY

What a great year we have had!

Moving our bull sale date from 14 June 2024 to 16 May 2025 was seamless and very successful. The bulls looked great and we enjoyed a warm sunny day not usually experienced in June. The sale was well supported both in attendance and on Bidr. Most lots sold to local Hawkes Bay clients but others shipped to Wellsford in the north, Taumarunui, Hunterville and Whanganui in the west, and the Hukataramea Valley down south. We had a total clearance with an average of just under \$8000.

After a mild winter, calving experienced excellent weather and underfoot conditions. There were few sets of twins this year which is always a relief. The outstanding event of the spring was our internet heifer sale conducted on the evening of Wednesday 22 October under the auspices of Bidr. What an exciting evening watching on our iPad at home as Bidr conducted the sale. Many thanks to Olivia Manley from Bidr and Simon Smith from PGGWrightson for ensuring the smooth running of the event.

In summary, we sold a full clearance of 13 heifers in the sale plus another four after the sale for an average of \$5000. The majority of those sold went to breeders in the South Island.

Late October and early November was warm and wet. Grass growth was excellent and all stock did well. Sam Moore was able to find us all our baleage requirements and brother Kevin made some for us as well. Our 2024 heifer calves had been grazing at Kevin's for the winter and we brought them home and replaced them with 15 "B" bulls from the R2 mob.

In December the rain dried up and heading into January the grass quickly went to seed. A drought looked very likely, but no! Good rain in mid-January and early February guaranteed autumn growth. The farm looked a picture and all classes of stock bloomed, including the sale bulls.

Another new activity for Glen Anthony this year was to support local horse racing. We sponsored the Hawkes Bay steeplechase at Woodville in July and

supported the Waipukurau Jockey Club at their reopening of the Waipukurau racecourse in November by sponsoring the Glen Anthony Simmental 1200m race. What a fantastic day! Brilliant sunshine, a huge crowd. Horse racing is definitely back in Waipukurau.

What an amazing time for beef farmers. Plenty of grass and prices of beef cattle for all classes at the saleyards and the freezing works rose to great heights: \$6-7.50 per kg of live weight in the saleyards was readily achievable. Two year old beef steers selling at Matawhero made over \$3000 per head. Then \$9.30 pr kg at the freezing works was readily available from February right through to mid-April. We made the most of these prices, killing any bulls that didn't look good enough to make our sale team - \$3880 for the light bulls and \$4400 for heavier types.

Weaner calf sales throughout New Zealand have been extremely buoyant especially for Simmental cross steers, heifers and bulls. Well grown steers weighing over 350kg have sold in excess of \$2300 and heifers weighing over 270kg fetched \$1680.

Congratulations to Kevin and Shelley Bradley (Glen Anthony clients for many years) who sold a total of 141 Simmental cross weaners at the Fielding Weaner Fair on 23 March 2026. This was their complete calf tally for 2025. None were left home. Their top bull calves made \$2150 with an average of \$1460. Their heifer calves weighing 270kg topped the sale at \$1610.

We look forward to welcoming buyers to 825 Farm Road, Waipukurau, on Friday 15 May 2026 and also look forward to catering for those who wish to stay home and use Bidr to join the sale.

You are all welcome to view the bulls at any time especially from 11am on sale day. Morning tea and lunch available at the covered sale arena on farm.

Tony Thompson



REFERENCE SIRE **GLEN ANTHONY JUDGE RED 20-27**

LRX HP ROCKET 23Y

SIRE: GLEN ANTHONY EXECUTIVE AE11

RATALEA YULE AY05

MONREID YARDSTICK A06001 (IMP AUS)

DAM: GLEN ANTHONY AU0112

GLEN ANTHONY AP16

DOB 2020-07-22

ID No. 0299200027

APRIL SIMMENTAL IGS EBVS

C-ED (%)	BW (KG)	WW (KG)	YW (KG)	600D WT. (KG)	CWT.	REA (SQ. CM)	FAT (MM)	MARBLING
+0	+6.5	+79	+108	+143	+25	+12.1	-6	-0.38
+11	+4.3	+76	+113	+132	+30	+11.3	-5.1	-0.01

COMMENTS: Judge Red was one of the best performing Executive sons from the 2019 mating. He was the last calf from our best Monreid Yardstick cow AU112, who was 12 years of age when she calved. Judge red inherited his father's excellent carcass qualities and had the star quality of being homo polled.



REFERENCE SIRE **GOLD CREEK HELSINKI**

WAI-ITI XPECTOR AX90

SIRE: GOLD CREEK EXPECTOR

GOLD CREEK AY3

GOLD CREEK ZEROX

DAM: GOLD CREEK CLARE

GOLD CREEK AKAROA

DOB 2019-10-05

ID No. 1690190063

APRIL SIMMENTAL IGS EBVS

C-ED (%)	BW (KG)	WW (KG)	YW (KG)	600D WT. (KG)	CWT.	REA (SQ. CM)	FAT (MM)	MARBLING
+5	+6.5	+79	+104	+134	+18	+7.5	-3.9	-0.4
+11	+4.3	+76	+113	+132	+30	+11.3	-5.1	-0.01

COMMENTS: Goldie has been an important part of the Glen Anthony Sire battery since 2021. Homozygous Polled with a large frame score has allowed us to use him in our program to produce guaranteed polled offspring and more size in our polled cattle.



REFERENCE SIRE **GLEN ANTHONY KOJACK 21-02**

BIG HILLS CANE 62B

SIRE: GRINALTAS HP SENSATION FF909D (IMP CAN)

GRINALTA'S FRITA-PPFF109W

GLEN ANTHONY Y-ARTA AY02

DAM: GLEN ANTHONY AF025

GLEN ANTHONY AC038

DOB 2021-06-28

ID No. 0299210002

APRIL SIMMENTAL IGS EBVS

C-ED (%)	BW (KG)	WW (KG)	YW (KG)	600D WT. (KG)	CWT.	REA (SQ. CM)	FAT (MM)	MARBLING
+11	+4.5	+71	+103	+88	+25	+12	-5.4	-0.08
+11	+4.3	+76	+113	+132	+30	+11.3	-5.1	-0.01

COMMENTS:



REFERENCE SIRE **GLEN ANTHONY KERMIT 21-08**

BIG HILLS CANE 62B

SIRE: GRINALTAS HP SENSATION FF909D (IMP CAN)

GRINALTA'S FRITA-PPFF109W

GLEN ANTHONY DAKOTA AD20

DAM: GLEN ANTHONY AG03

GLEN ANTHONY AD27

DOB 2021-07-10
ID No. 0299210008

APRIL SIMMENTAL IGS EBVS

C-ED (%)	BW (KG)	WW (KG)	YW (KG)	600D WT. (KG)	CWT.	REA (SQ. CM)	FAT (MM)	MARBLING
+22	+3.4	+69	+98	+112	+26	+13.7	-5.7	+0.02
+11	+4.3	+76	+113	+132	+30	+11.3	-5.1	-0.01

COMMENTS:

CONDITIONS OF SALE

1. The Sale: will be conducted in accordance with conditions of sale as set down by the Hawke's Bay Stock and Station Agents Association, a copy of which will be exhibited at the sale.
2. Veterinary Test: Glen Anthony Stud is accredited for both Brucellosis and Tuberculosis- C10. These bulls are all blood tested free of B.V.D. and vaccinated twice before sale.
3. Semen & Service Testing: All entries in this sale have been semen tested and serving ability tested prior to sale. This is Glen Anthony Stud's commitment to clients, to put up for sale a quality assured product - a bull that at the point of sale is 100% fertile and capable of serving. We encourage buyers to insure their bulls at the point of sale to cover them for problems that may arise from that time onwards which are outside the vendor's control.
4. Insurance: Each lot will be at the risk of the purchaser as from the fall of the hammer. Transit insurance and period insurance can be arranged with the Auctioneers. No errors, omissions or misdescription will in any way invalidate the sale.
5. Breed Society: Breed society transfers must be signed prior to animals being removed from the selling centre.
6. Animals sold for export: Sales to overseas buyers are conditional on the animals passing the necessary export tests. Unless the animals fail the tests all costs from the fall of the hammer will be borne by the purchaser.
7. Deliveries: Before any animal is removed from the selling centre a delivery instruction sheet must be completed and signed by each buyer.

The New Zealand Stock & Station Agent's Association Conditions of Sale and, to the extent deemed relevant by PGG Wrightson Limited (PGW), PGW's Terms of Sale apply to this sale. When proceeds are credited or a purchase is debited to a PGW monthly credit account, then PGW's Monthly Account Terms of Trade (as amended from time to time) apply to the extent deemed relevant by PGW. These terms can be inspected at the registration desk and on the wall in the auction room. The current versions of PGW's Terms of Sale and Monthly Account Terms of Trade are also available online at: www.pggwrightson.co.nz\Our-Company\Terms-and-Conditions or in hardcopy on request.

All intending purchasers must register at the sales office prior to the sale.

PGW will pay a purchasing rebate of 6% of the purchase price excluding GST, plus GST, to livestock companies & recognised independent livestock agents with a PGW account who have introduced buyers to PGW before the sale and/or accompanied buyers to the sale.

UNDERSTANDING SIMMENTAL IGS EBVS



MATERNAL EBVS

Calving Ease Direct (CE-D): Reported as the percentage of extra unassisted births in first calving heifers, relative to the average. CE-D is relative to the direct Calving Ease of the animal. Higher values are more favourable.

Calving Ease Maternal (CE-M): Reported as the percentage of extra unassisted births in first calving heifers, relative to the average. CE-M is relative to the Calving Ease of the daughters of the animal. Higher values are more favourable.

Gestation Length: (days) is an estimate of the time from conception to the birth of the calf and is based on artificial insemination and hand mating records. Lower (negative) Gestation Length EBVs indicate shorter gestation length and easier calving and increased growth after birth.

Milk: Reported as kilograms of weaning weight of progeny from the animals daughters, relative to the average. Predicts the difference in maternal production of daughters relative to milk production and mothering. Values are relative to the environment of the production system. Low input environments should be very conscious of introducing too much milk due to the increased nutrient requirements that it can place on cows.

Maternal Weaning Weight: Reported as kilograms of weaning weight of progeny from the animals daughters, relative to the average. This is a measure of weaning weight differences relative to the combined effects of growth and milk. Breeders who are not looking to change milk production should consider Total Maternal as the most relevant EBV for maternal weaning weights. Higher values are more favourable.

Stayability (Stay): Reported as the differences in percentage of a sire's offspring that are predicted to still be in the herd at 6 years of age, given that they calved at 2, relative to the average. Stayability is a measure of reproductive longevity. Higher values are more favourable.

Docility: Reported as the percentage of progeny, relative to the average, that will record a score of docile. Higher values are more favourable.

GROWTH EBVS

Birth Weight (BW): Reported in kilograms of birth weight relative to the average. When selecting bulls to use on heifers, breeders should also focus on the Calving Ease EBV as Birthweight is already used in the Calving Ease EBV calculation.

Weaning Weight (WW) - adjusted to 205 days: Reported in kilograms of weaning weight of direct progeny, relative to the average. Higher values are usually more favourable dependant on its relationship with birthweight.

Yearling Weight (YW) - adjusted to 365 days: Reported in kilograms of yearling weight of direct progeny, relative to the average. Higher values are usually more favourable dependant on its relationship with birthweight.

600-Day Weight: (kg) is calculated from the weight of progeny taken between 501 and 900 days of age, adjusted to 600 days and for age of dam. This EBV is the best single estimate of an animal's genetic merit for growth beyond yearling age.

CARCASE EBVS - Adjusted to 475 Days of Age

Carcase Weight: Reported as kilograms of Carcase Weight relative to the average. Higher values are usually more favourable, however this is relevant to each producers target market.

Rib Eye Area (REA): Reported as square cm relative to the average. Higher values are usually more favourable.

Fat: Reported as mm of back fat relative to the average. Higher values are usually more favourable, however this requires a balance between adequate doing ability in daughters and carcase fat thresholds for target markets.

Marble Score: Reported as the differences in actual carcase marble scores relative to the average. This is different to IMF% which is used as an indicator trait in Marble Score. Higher values are more favourable.

Understanding Accuracies: BOLT EBV accuracies have experienced the most change, usually lowering numerically and especially for non-parent animals, however the reported accuracy will be more accurate. Accuracy refers to the amount a reported EBV can possibly change as more data is added. EBV values with higher accuracy result in less possible change for the value over time. More accurate accuracies better represent the amount of possible change for each EBV.



For more information on understanding IGS Genetic Evaluation, including FAQ's, performance requirements and login information, scan the QR code



E: registry@pbbnz.com • P: 06 323 4484 • pbbnz.com

SIMMENTAL NZ BREED AVG. EBVS FOR 2024 BORN CALVES

APRIL SIMMENTAL IGS EBVS

C-ED (%)	BW (kg)	WW (kg)	YW (kg)	600D Wt. (kg)	Cwt.	REA (sq. cm)	FAT (mm)	Marbling
11	4.3	76	113	132	30	11.3	-5.1	0.01

Disclaimer: Information contained within this catalogue, including but not limited to pedigree, performance, genomic (DNA), Estimated Breeding Value (EBV) and/or index information, is based on or derived from data supplied by members and/or third parties.

Whilst every effort is made to ensure the accuracy of the information, The Helical Company Limited, the Society or Association, and their officers and employees assume no responsibility for the content of any information displayed, its use, or interpretation.

2026 IGS APRIL PERCENTILE BAND FOR 2024 BORN CALVES

Band	Calving Ease Dir. (%)	Birth Wgt. (kg)	Weaning Wgt. (kg)	Yearling Wgt. (kg)	600 Day Wgt. (kg)	Carcass Wgt. (kg)	REA (sq cm)	Back Fat (mm)	Marbling Score
1%	31	-0.5	93	139	167	47	16.4	-3	0.66
5%	25	0.9	88	132	155	41	14.7	-3.8	0.43
10%	22	1.8	86	127	150	39	13.8	-4.2	0.3
15%	20	2.4	84	124	147	37	13.3	-4.5	0.24
20%	18	2.7	82	122	144	35	12.9	-4.6	0.18
25%	16	3	81	120	142	34	12.5	-4.7	0.14
30%	15	3.4	80	119	140	33	12.3	-4.8	0.1
35%	14	3.6	79	117	138	32	12	-4.9	0.06
40%	13	3.9	78	116	137	31	11.7	-5	0.04
45%	12	4.1	77	114	135	30	11.5	-5.1	0
50%	11	4.4	76	113	133	29	11.4	-5.2	-0.02
55%	10	4.5	76	111	132	29	11.1	-5.2	-0.04
60%	9	4.8	75	110	130	28	10.8	-5.3	-0.08
65%	8	5.1	74	108	128	27	10.6	-5.4	-0.1
70%	7	5.4	73	107	126	26	10.3	-5.5	-0.14
75%	6	5.6	72	105	124	25	10.1	-5.5	-0.18
80%	4	5.9	71	103	121	24	9.8	-5.6	-0.22
85%	3	6.3	70	101	117	22	9.3	-5.8	-0.28
90%	1	6.6	68	98	113	21	8.8	-5.9	-0.32
95%	-1	7.3	64	93	104	18	8	-6.2	-0.42
99%	-6	8.5	58	82	90	12	6.2	-6.9	-0.58

LOT. 1

GA Navaho 24-28

DOB 2024-08-15
ID No. 0299240028
Horn Status Hetero Polled



GRINALTAS HP SENSATION FF909D (IMP CAN)

SIRE: GLEN ANTHONY GA 21-08

GLEN ANTHONY AG03

GLEN ANTHONY EXECUTIVE AE11

DAM: RUAVIEW PAULETTE 200005

RUAVIEW PAM AD4

Sale Day Weight	
Testicle size	41
EMA	98.5
Muscle Score	B
Rib Fat	5.59
Rump Fat	4.57
Docility	1

APRIL SIMMENTAL IGS EBVS

C-ED (%)	BW (KG)	WW (KG)	YW (KG)	600D WT. (KG)	CWT.	REA (SQ. CM)	FAT (MM)	MARBLING
+19	+3.3	+71	+99	+128	+26	+12.9	-5.7	-0.04
+11	+4.3	+76	+113	+132	+30	+11.3	-5.1	-0.01

COMMENTS: An outstanding polled bull to start the sale. Look at his overall length and especially hip to pin. He has an excellent depth in the hind quarters. The softness of his muscle pattern is supported by the best fat measurements in this sale. Navaho has highly positive data for birth weight and calving ease and was used very successfully as a yearling to cover our first calving heifers this last season.

PURCHASER: PRICE:

LOT. 2

GA Nemesis 24-48

DOB 2024-08-28
ID No. 0299240048
Horn Status Hetero Polled



GLEN ANTHONY EXECUTIVE AE11

SIRE: GLEN ANTHONY JUDGE RED 20-27

GLEN ANTHONY AU0112

GLEN ANTHONY MACHO MAN

DAM: GLEN ANTHONY AF024

GLEN ANTHONY AA34

Sale Day Weight	
Testicle size	42
EMA	102.2
Muscle Score	A
Rib Fat	2.54
Rump Fat	4.32
Docility	1.5

APRIL SIMMENTAL IGS EBVS

C-ED (%)	BW (KG)	WW (KG)	YW (KG)	600D WT. (KG)	CWT.	REA (SQ. CM)	FAT (MM)	MARBLING
-2	+7.5	+81	+116	+150	+27	+10.8	-5.6	-0.26
+11	+4.3	+76	+113	+132	+30	+11.3	-5.1	-0.01

COMMENTS: An excellent Judge Red son, he displays a well balanced muscle pattern with outstanding depth and width from his hind quarters, right through. Sound feet and legs and a very quiet temperament.

PURCHASER:..... PRICE:.....

LOT. 3

GA Nautilus 24-50

DOB 2024-08-29
ID No. 0299240050
Horn Status Homo Polled



GLEN ANTHONY EXECUTIVE AE11

SIRE: GLEN ANTHONY JUDGE RED 20-27

GLEN ANTHONY AU0112

GLEN ANTHONY Y-ARTA AY02

DAM: GLEN ANTHONY AF019

GLEN ANTHONY AD23

Sale Day Weight	
Testicle size	41
EMA	104
Muscle Score	A
Rib Fat	2.54
Rump Fat	4.06
Docility	1.0

APRIL SIMMENTAL IGS EBVS

C-ED (%)	BW (KG)	WW (KG)	YW (KG)	600D WT. (KG)	CWT.	REA (SQ. CM)	FAT (MM)	MARBLING
+14	+4.1	+73	+101	+136	+23	+10.2	-5.7	-0.3
+11	+4.3	+76	+113	+132	+30	+11.3	-5.1	-0.01

COMMENTS: What an excellent bull to lead our line of Homozygous Polled bulls by Judge Red out of a Y-arta cow. He displays an amazing soft expansive muscle pattern on sound feet and legs. He has positive data for birthweight and calving ease and an excellent temperament.

PURCHASER:..... PRICE:.....

LOT. 4

GA Napoleon 24-18

DOB 2024-08-11
ID No. 0299240018
Horn Status Homo Polled



GOLD CREEK EXPECTOR

SIRE: GOLD CREEK HELSINKI

GOLD CREEK CLARE

GLEN ANTHONY EXECUTIVE AE11

DAM: GLEN ANTHONY 20/46

GLEN ANTHONY AD27

Sale Day Weight	
Testicle size	40
EMA	100.4
Muscle Score	B
Rib Fat	2.03
Rump Fat	3.81
Docility	2.0

APRIL SIMMENTAL IGS EBVS

C-ED (%)	BW (KG)	WW (KG)	YW (KG)	600D WT. (KG)	CWT.	REA (SQ. CM)	FAT (MM)	MARBLING
+6	+5.6	+79	+107	+141	+23	+9.8	-4.9	-0.4
+11	+4.3	+76	+113	+132	+30	+11.3	-5.1	-0.01

COMMENTS: So good to see a Homozygous Polled bull with that extra frame size; yet retaining excellent carcass qualities. Napoleon represents the Goldie-Executive cross. He has positive data for weaning weight and 600 day weight and an excellent temperament.

PURCHASER:..... PRICE:.....

LOT. 5

GA Neptune 24-27

DOB 2024-08-15
ID No. 0299240027
Horn Status Homo Polled



GRINALTAS HP SENSATION FF909D (IMP CAN)

SIRE: GLEN ANTHONY GA 21-08

GLEN ANTHONY AG03

GLEN ANTHONY TRALEE AT70

DAM: GLEN ANTHONY AG25

GLEN ANTHONY AE14

Sale Day Weight	
Testicle size	40
EMA	85.9
Muscle Score	B
Rib Fat	2.29
Rump Fat	3.81
Docility	1.5

APRIL SIMMENTAL IGS EBVS

C-ED (%)	BW (KG)	WW (KG)	YW (KG)	600D WT. (KG)	CWT.	REA (SQ. CM)	FAT (MM)	MARBLING
+16	+4	+63	+90	+110	+21	+11.2	-5.4	-0.06
+11	+4.3	+76	+113	+132	+30	+11.3	-5.1	-0.01

COMMENTS: A smooth Homozygous Polled young sire with a very well-set shoulder and good neck extension. By combining that smoot confirmation with positive data for birthweight and calving ease, Neptune is definitely an easy calving proposition. Such a good temperament as well.

PURCHASER:..... PRICE:.....

LOT. 6

GA Norman 24-12

DOB 2024-08-04
ID No. 0299240012
Horn Status Homo Polled



GLEN ANTHONY EXECUTIVE AE11

SIRE: GLEN ANTHONY JUDGE RED 20-27

GLEN ANTHONY AU0112

LRX HP ROCKET 23Y

DAM: GLEN ANTHONY AE20

GLEN ANTHONY AW65

Sale Day Weight	
Testicle size	42
EMA	93.2
Muscle Score	C
Rib Fat	2.03
Rump Fat	3.81
Docility	1.5

APRIL SIMMENTAL IGS EBVS

C-ED (%)	BW (KG)	WW (KG)	YW (KG)	600D WT. (KG)	CWT.	REA (SQ. CM)	FAT (MM)	MARBLING
+1	+6.4	+85	+118	+136	+31	+13.8	-5.8	-0.3
+11	+4.3	+76	+113	+132	+30	+11.3	-5.1	-0.01

COMMENTS: Homozygous Polled, light boned, moderate frame score, a moderate muscle pattern saved by a well-set shoulder. BUT LOOK ... He has the GENETICS ... The most highly positive data of any bull in this catalogue for weaning, yearling and 600 day weights plus EMA.

PURCHASER:..... PRICE:.....

LOT. 7

GA Nashville 24-40

DOB 2024-08-21
ID No. 0299240040
Horn Status Homo Polled



GOLD CREEK EXPECTOR

SIRE: GOLD CREEK HELSINKI

GOLD CREEK CLARE

GLEN ANTHONY EXECUTIVE AE11

DAM: GLEN ANTHONY 19/49

GLEN ANTHONY AC025

Sale Day Weight	
Testicle size	41
EMA	93
Muscle Score	A
Rib Fat	2.54
Rump Fat	4.32
Docility	1.5

APRIL SIMMENTAL IGS EBVS

C-ED (%)	BW (KG)	WW (KG)	YW (KG)	600D WT. (KG)	CWT.	REA (SQ. CM)	FAT (MM)	MARBLING
+8	+5.5	+81	+110	+138	+25	+9.5	-4.9	-0.32
+11	+4.3	+76	+113	+132	+30	+11.3	-5.1	-0.01

COMMENTS: Another Homozygous Polled bull displaying the qualities of the Goldie-Executive cross. Nashville has an excellent muscle expression with good width through the back and depth in his hind quarters. Positive data for weaning weight, 600 day weight, gestation length and fat. An easy doing bull.

PURCHASER:..... PRICE:.....

LOT. 8

GA Nandi 24-61

DOB 2024-09-04
ID No. 0299240061
Horn Status Homo Polled



GLEN ANTHONY EXECUTIVE AE11

SIRE: GLEN ANTHONY JUDGE RED 20-27

GLEN ANTHONY AU0112

GLEN ANTHONY Y-ARTA AY02

DAM: GLEN ANTHONY AE2

GLEN ANTHONY AC011

Sale Day Weight	
Testicle size	42
EMA	105
Muscle Score	B
Rib Fat	2.29
Rump Fat	2.54
Docility	2.0

APRIL SIMMENTAL IGS EBVS

C-ED (%)	BW (KG)	WW (KG)	YW (KG)	600D WT. (KG)	CWT.	REA (SQ. CM)	FAT (MM)	MARBLING
+21	+2.8	+72	+100	+117	+26	+9.4	-5.6	-0.24
+11	+4.3	+76	+113	+132	+30	+11.3	-5.1	-0.01

COMMENTS: The Judge Red - Y-arta cross. Nandi is a smooth bull with excellent length, a good shoulder setting and excellent neck extension. Combining those features with his strongly positive data with birth weight and calving ease suggests Nandi could be used for heifer mating. Both Homozygous Polled and an excellent temperament are added bonuses.

PURCHASER:..... PRICE:.....

LOT. 9

GA Niagara 24-51

DOB 2024-08-29

ID No. 0299240051

Horn Status Homo Polled



GOLD CREEK EXPECTOR

SIRE: GOLD CREEK HELSINKI

GOLD CREEK CLARE

GLEN ANTHONY EXECUTIVE AE11

DAM: GLEN ANTHONY 20/47

GLEN ANTHONY AC025

Sale Day Weight	
Testicle size	40
EMA	96.3
Muscle Score	C
Rib Fat	2.79
Rump Fat	4.32
Docility	1.5

APRIL SIMMENTAL IGS EBVS

C-ED (%)	BW (KG)	WW (KG)	YW (KG)	600D WT. (KG)	CWT.	REA (SQ. CM)	FAT (MM)	MARBLING
+5	+6.3	+82	+111	+138	+25	+9.5	-4.9	-0.32
+11	+4.3	+76	+113	+132	+30	+11.3	-5.1	-0.01

COMMENTS: Another Goldie-Executive Cross bull bucking the trend that Homozygous bulls are smaller. Niagara has that extra frame size namely more length and height. With positive data for weaning weight, he will sire weaners to top the Fair.

PURCHASER:..... PRICE:.....

LOT. 10

GA Nelson 24-03

DOB 2024-07-28
ID No. 0299240003
Horn Status Hetero Polled



GOLD CREEK EXPECTOR

SIRE: GOLD CREEK HELSINKI

GOLD CREEK CLARE

GLEN ANTHONY EXECUTIVE AE11

DAM: GLEN ANTHONY 20-11

GLEN ANTHONY AC007

Sale Day Weight	
Testicle size	44
EMA	95.0
Muscle Score	B
Rib Fat	2.54
Rump Fat	3.81
Docility	2.0

APRIL SIMMENTAL IGS EBVS

C-ED (%)	BW (KG)	WW (KG)	YW (KG)	600D WT. (KG)	CWT.	REA (SQ. CM)	FAT (MM)	MARBLING
+3	+6.6	+82	+112	+137	+24	+9.4	-4.9	-0.36
+11	+4.3	+76	+113	+132	+30	+11.3	-5.1	-0.01

COMMENTS: An early maturing polled sire with excellent width and depth in his muscle pattern. He shows positive data for weaning weight, 600 day weights and Fats. An ideal bull to sire early maturing Steers and Heifers

PURCHASER:..... PRICE:.....

LOT. 11

GA Normus 24-49

DOB 2024-08-28
ID No. 0299240049
Horn Status Hetero Polled



GLEN ANTHONY EXECUTIVE AE11

SIRE: GLEN ANTHONY JUDGE RED 20-27

GLEN ANTHONY AU0112

GLEN ANTHONY DAKOTA AD20

DAM: GLEN ANTHONY 18/06

GLEN ANTHONY AD05

Sale Day Weight	
Testicle size	41
EMA	102.3
Muscle Score	A
Rib Fat	2.79
Rump Fat	3.30
Docility	1.5

APRIL SIMMENTAL IGS EBVS

C-ED (%)	BW (KG)	WW (KG)	YW (KG)	600D WT. (KG)	CWT.	REA (SQ. CM)	FAT (MM)	MARBLING
+5	+5.8	+72	+97	+135	+21	+10.3	-5.9	-0.44
+11	+4.3	+76	+113	+132	+30	+11.3	-5.1	-0.01

COMMENTS: Normis is a big bull who has performed so well in our herd showing the best weight gain at each weighing. He has great length with outstanding width and thickness through his back line. And extra depth in the hind quarters. NOT recommended for heifer mating or use over smaller cows.

PURCHASER:..... PRICE:.....

LOT. 12

GA Nijinsky 24-26

DOB 2024-08-15
ID No. 0299240026
Horn Status Hetero Polled



GOLD CREEK EXPECTOR

SIRE: GOLD CREEK HELSINKI

GOLD CREEK CLARE

GLEN ANTHONY DEMOCRAT D18

DAM: GLEN ANTHONY 18/40

GLEN ANTHONY ADO4

Sale Day Weight	
Testicle size	40
EMA	95.8
Muscle Score	C
Rib Fat	2.03
Rump Fat	3.81
Docility	1.5

APRIL SIMMENTAL IGS EBVS

C-ED (%)	BW (KG)	WW (KG)	YW (KG)	600D WT. (KG)	CWT.	REA (SQ. CM)	FAT (MM)	MARBLING
+3	+6.4	+68	+92	+126	+16	+7.4	-4.4	-0.22
+11	+4.3	+76	+113	+132	+30	+11.3	-5.1	-0.01

COMMENTS: A Stylish young bull with that extra frame size, typical of so many of Goldies progeny. Like GA Napoleon (Lot 4) he has retained excellent carcass quality with the size. This young bull will produce weaners that will stand out on sale day.

PURCHASER:..... PRICE:.....

LOT. 13

GA Nishka 24-32

DOB 2024-08-16
ID No. 0299240032
Horn Status Hetero Polled



GRINALTAS HP SENSATION FF909D (IMP CAN)

SIRE: GLEN ANTHONY KOJACK 21-02

GLEN ANTHONY AF025

GRINALTAS HP SENSATION FF909D (IMP CAN)

DAM: GLEN ANTHONY GA 21-14

GLEN ANTHONY AD37

Sale Day Weight	
Testicle size	40
EMA	92.5
Muscle Score	A
Rib Fat	2.29
Rump Fat	3.81
Docility	2.0

APRIL SIMMENTAL IGS EBVS

C-ED (%)	BW (KG)	WW (KG)	YW (KG)	600D WT. (KG)	CWT.	REA (SQ. CM)	FAT (MM)	MARBLING
+8	+5.4	+73	+107	+104	+25	+12.8	-5.6	-0.06
+11	+4.3	+76	+113	+132	+30	+11.3	-5.1	-0.01

COMMENTS: A clean polled very smooth young sire with extra length, a deeply muscled hind quarter and a well-set shoulder.

PURCHASER:..... PRICE:.....

LOT. 14

GA Nolan 24-05

DOB 2024-07-31
ID No. 0299240005
Horn Status Hetero Polled



GOLD CREEK EXPECTOR

SIRE: GOLD CREEK HELSINKI

GOLD CREEK CLARE

GLEN ANTHONY DEMOCRAT D18

DAM: GLEN ANTHONY 20-20

GLEN ANTHONY YVETTE AY16

Sale Day Weight	
Testicle size	45
EMA	102
Muscle Score	C
Rib Fat	2.03
Rump Fat	3.81
Docility	2.0

APRIL SIMMENTAL IGS EBVS

C-ED (%)	BW (KG)	WW (KG)	YW (KG)	600D WT. (KG)	CWT.	REA (SQ. CM)	FAT (MM)	MARBLING
+9	+5.5	+75	+103	+142	+19	+8.6	-4.8	-0.3
+11	+4.3	+76	+113	+132	+30	+11.3	-5.1	-0.01

COMMENTS: Nolan is a clean polled bull from the Goldie-Democrat cross. He has a smooth muscle pattern, a medium frame score and a well-set shoulder. A no fuss bull with a good temperament

PURCHASER:..... PRICE:.....

LOT. 15

GA Nevin 24-09

DOB 2024-08-04
ID No. 0299240009
Horn Status Homo Polled



GOLD CREEK EXPECTOR

SIRE: GOLD CREEK HELSINKI

GOLD CREEK CLARE

GLEN ANTHONY EXECUTIVE AE11

DAM: GLEN ANTHONY 20/52

GLEN ANTHONY AE50

Sale Day Weight	
Testicle size	36
EMA	113.4
Muscle Score	B
Rib Fat	2.54
Rump Fat	2.03
Docility	1.5

APRIL SIMMENTAL IGS EBVS

C-ED (%)	BW (KG)	WW (KG)	YW (KG)	600D WT. (KG)	CWT.	REA (SQ. CM)	FAT (MM)	MARBLING
+5	+6.2	+81	+110	+131	+24	+9.9	-4.9	-0.38
+11	+4.3	+76	+113	+132	+30	+11.3	-5.1	-0.01

COMMENTS: Neven is another product of the Goldie-Executive cross. He is an early maturing Homozygous polled bull, showing good thickness through the back (the top EMA of 113.4) and ample depth in the hind quarter. Good positive data for gestation length and weaning weight.

PURCHASER:..... PRICE:.....

LOT. 16

GA Nero 24-33

DOB 2024-08-18
ID No. 0299240033
Horn Status Homo Polled



GOLD CREEK EXPECTOR

SIRE: GOLD CREEK HELSINKI

GOLD CREEK CLARE

LRX HP ROCKET 23Y

DAM: GLEN ANTHONY AF14

GLEN ANTHONY AC020

Sale Day Weight	
Testicle size	40
EMA	99.2
Muscle Score	B
Rib Fat	3.30
Rump Fat	3.05
Docility	2.0

APRIL SIMMENTAL IGS EBVS

C-ED (%)	BW (KG)	WW (KG)	YW (KG)	600D WT. (KG)	CWT.	REA (SQ. CM)	FAT (MM)	MARBLING
+6	+5.7	+76	+103	+124	+21	+9.8	-4.8	-0.4
+11	+4.3	+76	+113	+132	+30	+11.3	-5.1	-0.01

COMMENTS: The last of the Homozygous Polled bulls in this catalogue. Nero is an early maturing, medium framed bull. He will make an excellent station sire producing 100% polled calves.

PURCHASER:..... PRICE:.....

LOT. 17

GA Nemo 24-35

DOB 2024-08-18
ID No. 0299240035
Horn Status Hetero Polled



GRINALTAS HP SENSATION FF909D (IMP CAN)

SIRE: GLEN ANTHONY KOJACK 21-02

GLEN ANTHONY AF025

GLEN ANTHONY GOVENOR 18/23

DAM: GLEN ANTHONY AK26

GLEN ANTHONY AF058

Sale Day Weight	
Testicle size	41
EMA	98.2
Muscle Score	B
Rib Fat	2.54
Rump Fat	4.06
Docility	2.0

APRIL SIMMENTAL IGS EBVS

C-ED (%)	BW (KG)	WW (KG)	YW (KG)	600D WT. (KG)	CWT.	REA (SQ. CM)	FAT (MM)	MARBLING
+9	+4.8	+76	+108	+113	+27	+12.3	-5.5	-0.2
+11	+4.3	+76	+113	+132	+30	+11.3	-5.1	-0.01

COMMENTS: A very smooth muscled bull with thickness through his top line and depth in his hind quarter. Nemo has an excellent temperament.

PURCHASER:..... PRICE:.....

LOT. 18

GA Nordic 24-46

DOB 2024-08-25
ID No. 0299240046
Horn Status Hetero Polled



GLEN ANTHONY EXECUTIVE AE11

SIRE: GLEN ANTHONY JUDGE RED 20-27

GLEN ANTHONY AU0112

PROSTOCK HUGO 7052T (IMP USA)

DAM: GLEN ANTHONY AD37

GLEN ANTHONY AW46

Sale Day Weight	
Testicle size	44
EMA	91.0
Muscle Score	B
Rib Fat	2.29
Rump Fat	4.32
Docility	2.0

APRIL SIMMENTAL IGS EBVS

C-ED (%)	BW (KG)	WW (KG)	YW (KG)	600D WT. (KG)	CWT.	REA (SQ. CM)	FAT (MM)	MARBLING
+2	+6.5	+77	+108	+134	+24	+11.5	-5.8	-0.26
+11	+4.3	+76	+113	+132	+30	+11.3	-5.1	-0.01

COMMENTS: An early maturing sire with a ton of meat in the right places, just look at his excellent hind quarters. Above average data for weaning weight, 600 day weight and EMA.

PURCHASER:..... PRICE:.....

LOT. 19

GA Niko 24-42

DOB 2024-08-22
ID No. 0299240042
Horn Status Hetero Polled



GOLD CREEK EXPECTOR

SIRE: GOLD CREEK HELSINKI

GOLD CREEK CLARE

GLEN ANTHONY DAKOTA AD20

DAM: GLEN ANTHONY 1908

GLEN ANTHONY AC047

Sale Day Weight	
Testicle size	41
EMA	95.7
Muscle Score	C
Rib Fat	2.29
Rump Fat	2.54
Docility	1.5

APRIL SIMMENTAL IGS EBVS

C-ED (%)	BW (KG)	WW (KG)	YW (KG)	600D WT. (KG)	CWT.	REA (SQ. CM)	FAT (MM)	MARBLING
+7	+6	+75	+101	+123	+20	+8.6	-4.8	-0.38
+11	+4.3	+76	+113	+132	+30	+11.3	-5.1	-0.01

COMMENTS: Smooth muscled bull with an excellent top line, well set shoulder and good neck extension. An excellent temperament and sound feet and legs.

PURCHASER:..... PRICE:.....

LOT. 20

GA Nesbo 24-06

DOB 2024-08-02
ID No. 0299240006
Horn Status Hetero Polled



GLEN ANTHONY EXECUTIVE AE11

SIRE: GLEN ANTHONY JUDGE RED 20-27

GLEN ANTHONY AU0112

GLEN ANTHONY Y-ARTA AY02

DAM: GLEN ANTHONY AA05

RATALEA YULE AY05

Sale Day Weight	
Testicle size	42
EMA	94.3
Muscle Score	B
Rib Fat	2.79
Rump Fat	2.54
Docility	1.5

APRIL SIMMENTAL IGS EBVS

C-ED (%)	BW (KG)	WW (KG)	YW (KG)	600D WT. (KG)	CWT.	REA (SQ. CM)	FAT (MM)	MARBLING
+7	+5.6	+78	+109	+116	+27	+10.2	-5.7	-0.32
+11	+4.3	+76	+113	+132	+30	+11.3	-5.1	-0.01

COMMENTS: A clean polled bull by Judge Red out of our oldest Y-arta cow. A smooth muscle pattern and an excellent temperament. Positive data for weaning weight.

PURCHASER:..... PRICE:.....

LOT. 21

GA Nixon 24-37

DOB 2024-08-20
ID No. 0299240037
Horn Status Hetero Polled



GLEN ANTHONY EXECUTIVE AE11

SIRE: GLEN ANTHONY JUDGE RED 20-27

GLEN ANTHONY AU0112

LEAFLAND AY27

DAM: GLEN ANTHONY AC038

GLEN ANTHONY AZ36

Sale Day Weight	
Testicle size	41
EMA	111
Muscle Score	B
Rib Fat	2.29
Rump Fat	2.79
Docility	2.0

APRIL SIMMENTAL IGS EBVS

C-ED (%)	BW (KG)	WW (KG)	YW (KG)	600D WT. (KG)	CWT.	REA (SQ. CM)	FAT (MM)	MARBLING
+1	+6.3	+73	+100	+128	+22	+10.2	-5.6	-0.34
+11	+4.3	+76	+113	+132	+30	+11.3	-5.1	-0.01

COMMENTS: A heavily scurred, smooth muscled bull showing a nice bit of extra length. look at that actual EMA reading of 110.9. Not often that the last bull in the sale has one of the best muscle measurements!

PURCHASER:..... PRICE:.....

LOT. 22

Gold Creek Helsinki 19-63

DOB 05/10/2019
ID No. 1690190063
Horn Status Homo Polled



WAI-ITI XPECTOR AX90

SIRE: GOLD CREEK EXPECTOR

GOLD CREEK AY3

GOLD CREEK ZEROX

DAM: GOLD CREEK CLARE

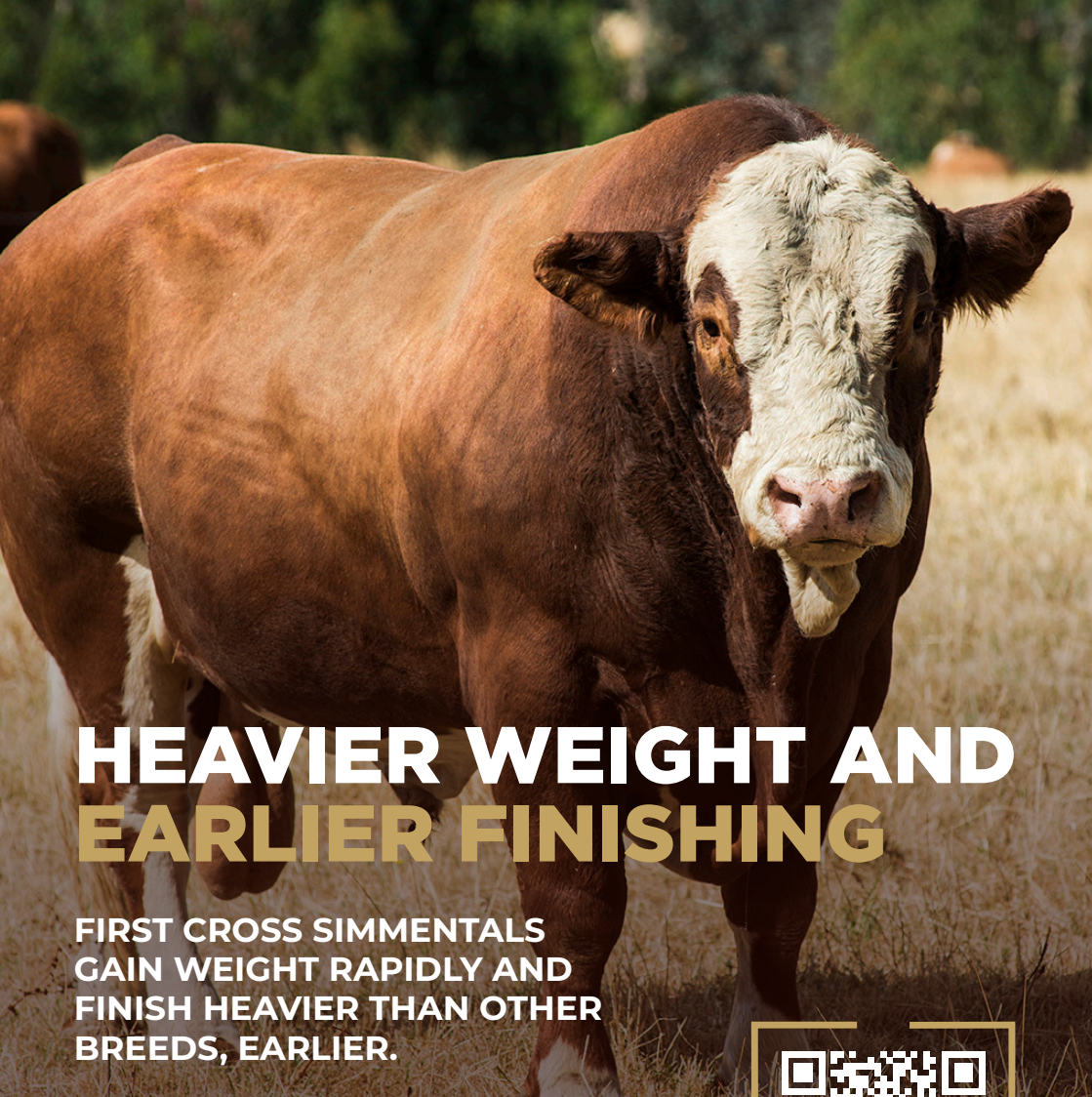
GOLD CREEK AKAROA

APRIL SIMMENTAL IGS EBVS

C-ED (%)	BW (KG)	WW (KG)	YW (KG)	600D WT. (KG)	CWT.	REA (SQ. CM)	FAT (MM)	MARBLING
+5	+6.5	+79	+104	+134	+17	+7.9	-4	-0.38
+11	+4.3	+76	+113	+132	+30	+11.3	-5.1	-0.01

COMMENTS: Selected by Grant Latimer at Gold Creeks 2021 Bull Sale, Helsinki (known to us as Goldie) has good sound feet and legs and an excellent temperament. Unlike most Homozygous Polled Bulls Goldie has a large frame score with extra height and length. We have used him in our programme to produce guaranteed polled offspring (2 Homozygous polled bulls in this catalogue) and more frame size in our polled cattle.

PURCHASER: PRICE:



HEAVIER WEIGHT AND EARLIER FINISHING

**FIRST CROSS SIMMENTALS
GAIN WEIGHT RAPIDLY AND
FINISH HEAVIER THAN OTHER
BREEDS, EARLIER.**

10% gain from Simmental cross
(30kg extra from a 300kg Angus)
= \$13,500 extra per season*

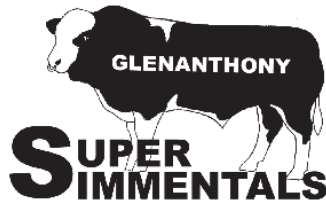
It makes sense to select a Simmental Bull for you and your farm this bull sales season.

Scan the QR to contact a breeder near you, or learn more at simmental.co.nz.



SIMMENTALNZ
THE MONEY MAKER

*based on premium of \$270/carcass, 50 progeny per season.



GLENANTHONY SIMMENTAL STUD
Friday 15th May 2026
BUYER'S INSTRUCTION SLIP

To be completed and handed to Agent before leaving the sale.

Name (Trading Title): Buyer No:

Address:

Phone:

Lots Purchased:

Please tick this box if you consent to your information being shared between

[insurer name.....], [vendor or organising body.....]
 and/or the relevant livestock agency, for the purpose of offering you insurance.

**HEREUNDER PLEASE DESCRIBE THE ARRANGEMENTS YOU
 HAVE MADE TO TAKE DELIVERY OF YOUR PURCHASES**

.....

Forward invoice to:

.....

Insurance required: YES / NO Insurance options: FMG Aon BWRS

.....

Signature of buyer

SPECIAL NOTES TO BUYERS

1. All instructions concerning the delivery, trucking or shipping of cattle must be given in writing and signed by the Buyer or his representative. Include the name and address of the Livestock Carrier engaged.
2. Instructions for despatch of consignments comprising more than one owner **MUST BE SIGNED BY EACH BUYER**. No instructions will be considered complete **UNTIL ALL HAVE SIGNED**.

NO VERBAL INSTRUCTIONS ACCEPTED



UNMATCHED GENETICS EXPERTISE

PGG Wrightson Genetics is New Zealand's only team of dedicated livestock genetics specialists.

CONTACT YOUR LOCAL REP FOR EXPERT ADVICE.

TOM SUTTOR

East Coast - Genetics Rep
027 446 9967

ANDREW HOLT

Hawke's Bay - Livestock Rep
027 496 3311

DON MCGREGOR

Hawke's Bay - Livestock Rep
027 445 7629

NEIL COMMON

Hawke's Bay - Area Livestock
Manager
027 444 8745

PAUL BAYES

Hawke's Bay - Livestock Rep
027 442 5151

BRENTON GIDDENS

Hawke's Bay - Livestock Rep
027 446 9961

MARK HOUGHTON

Hawke's Bay - Livestock Rep
027 597 5844

TAMA CAHILL

Hawke's Bay - Livestock Rep
027 287 4010

MICHAEL BEATTIE

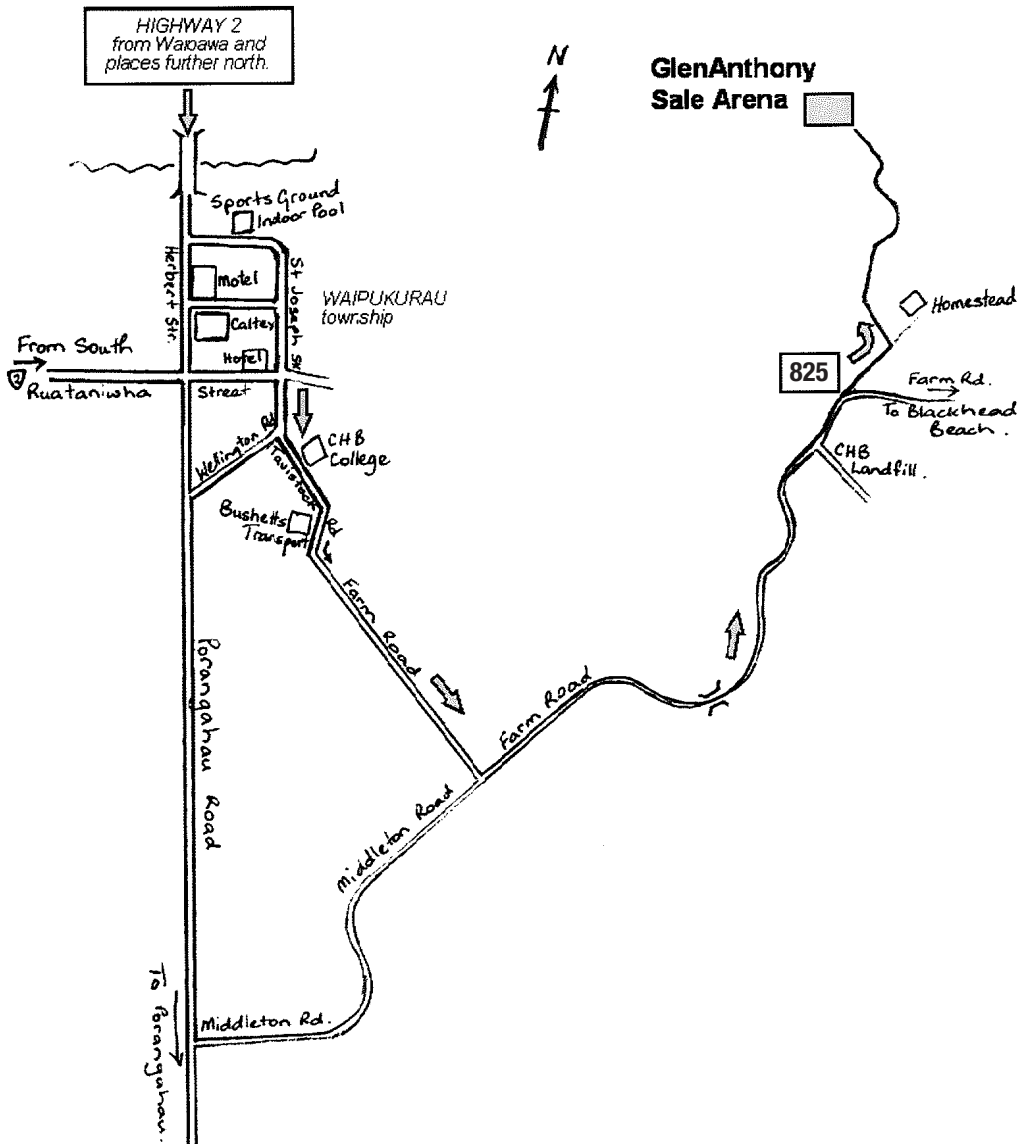
Hawke's Bay - Livestock Rep
027 313 8419

For more information go to
pggwrightson.co.nz/genetics

 fb.com/pgwgenetics
 instagram.com/pgwgenetics

Scan here to go to
our **Genetics** Hub





GLENANTHONY STUD LOCATION MAP

8.25 Km from Waipukurau Township

Note - 10 minutes driving time.